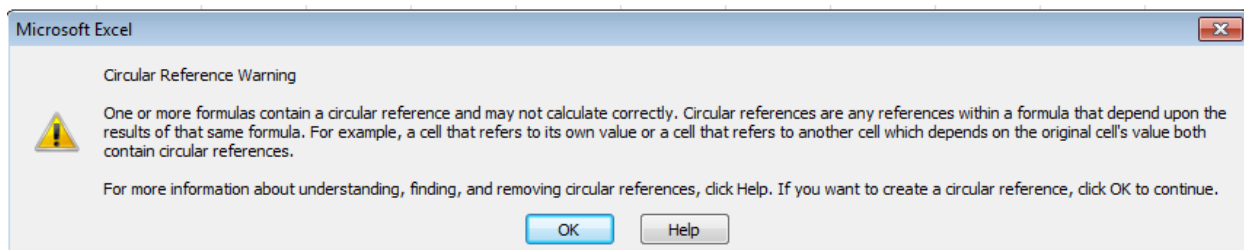


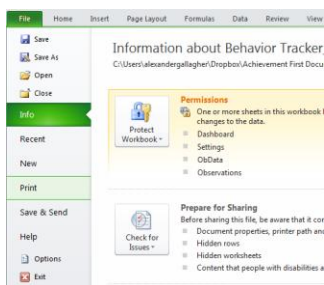
Correcting Circular Reference Warning

If you get the Circular Reference Warning when you open the FBA tracker, you will need to manually turn on iterative calculations on your Excel document.

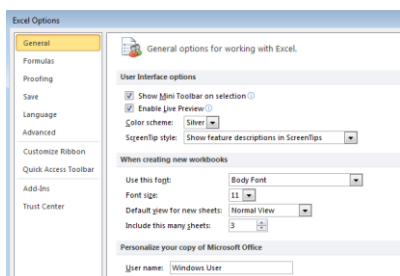


To turn on iterative calculations:

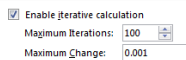
- 1) Hit "OK" on the error message
- 2) Go to the "File" menu at the top left corner of your screen.



- 3) Select "Options" in the column on the left.
- 4) In the "Excel Options" window, select "Formulas" in the left column.



- 5) Click the box next to "Enable Iterative Calculations"



- 6) Hit "OK" and get started!